

Accessories for "Marina" enclosures, 316 L stainless steel enclosures and control stations *increased safety*

Accessories for control stations only



Accessories common to enclosures and control stations



Accessories

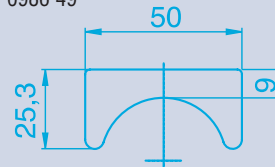
	Cat. No.	Pack
<ul style="list-style-type: none"> • Joining kit for linking 2 boxes, consisting of 2 screw bushings with 2 nuts and 2 seals. 	0986 55	1
<ul style="list-style-type: none"> • Fixing on a tube or frame using a metal strap (not supplied) max. width 22 mm, suitable for all tube diameters ≥ 80 mm 	0986 56	1
<ul style="list-style-type: none"> • Insert for push-button 	Cat. No.	Pack
- Green "ON"	0986 40	5
- Red "OFF"	0986 41	5
- Green "START"	0986 63	5
- Red "STOP"	0986 64	5
- Green "MARCHE"	0986 44	5
- Red "ARRET"	0986 45	5
- Green "I"	0986 42	5
- Red "O"	0986 43	5
- Black (unmarked)	0989 50	5
- Blue (unmarked)	0989 51	5
<ul style="list-style-type: none"> • 304 stainless steel padlocking devices (with seal) (3 padlocks $\varnothing 6$ mm maximum not supplied) 		
For stay put mushroom head push-button	0984 17	1
For push-button with or without stay put operation	0984 18	1
For 3-position switch		
Can be locked in "O" position (Cat. Nos. 0983 30 to 37 P.180)	0984 19	1
For black mushroom head with or without stay put operation	0984 20	1
<ul style="list-style-type: none"> • Mushroom head protection "EMERGENCY STOP" 	0986 57	1
<ul style="list-style-type: none"> • ATX key for push-button and emergency stop 	0986 65	1
<ul style="list-style-type: none"> • Key for actuators blocks 	0984 00	1
<ul style="list-style-type: none"> • Sheet with 57 functions (large model) 	0988 40	1
<ul style="list-style-type: none"> • Sheet with 57 functions (small model) 	0988 41	10
<ul style="list-style-type: none"> • 10 large blank self-adhesive labels (yellow) 	0986 49	10
<ul style="list-style-type: none"> • 10 small blank self-adhesive labels (yellow) 	0986 59	10
One side designed:		
- for marking with one of the above films		
- for mechanical engraving with black text		
<ul style="list-style-type: none"> • M20 cable gland (tightening 6.5 and 14.5 mm) 	0956 43	1
Polyamide body		
Supplied with weatherproof seal and 2 clamps		
<ul style="list-style-type: none"> • M20 plug in polycarbonate supplied with 1 seal 	0957 14	10
<ul style="list-style-type: none"> • Brass earthing plate for 2 x M20 (for polyamide control stations only) 	0986 61	1
<ul style="list-style-type: none"> • Earth terminal 	0986 62	1
<ul style="list-style-type: none"> • M20 locknut 	0957 01	10

TECHNICAL DATA

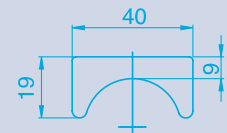
Blank self-adhesive dilophane labels in yellow, large model

Blank self-adhesive dilophane labels in yellow, small model

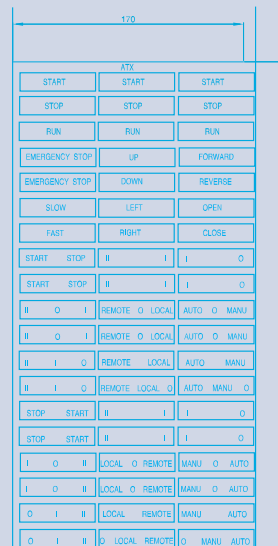
Set of 10
0986 49



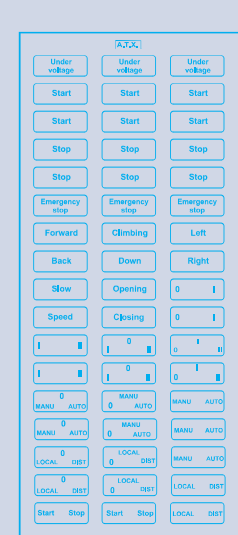
Set of 10
0986 59



0988 40 sheet (large model)



0988 41 sheet (small model)



Use of labels for each control station (large model and small model)

