

## TECHNICAL DATA

### Compatible computers

The ATX/URAVISION software runs on any type of PC which has the following minimum features:

- PC: Pentium with Windows 3.1, minimum 100 Mhz, 16 Mb of RAM.
- Screen: minimum 10 inch SVGA, with a minimum definition of 800 X 600, 256 colours.
- A4 format printer managed by Windows

If the PC is in continuous operation, it will monitor the system on a permanent basis. It may also be viewed occasionally.

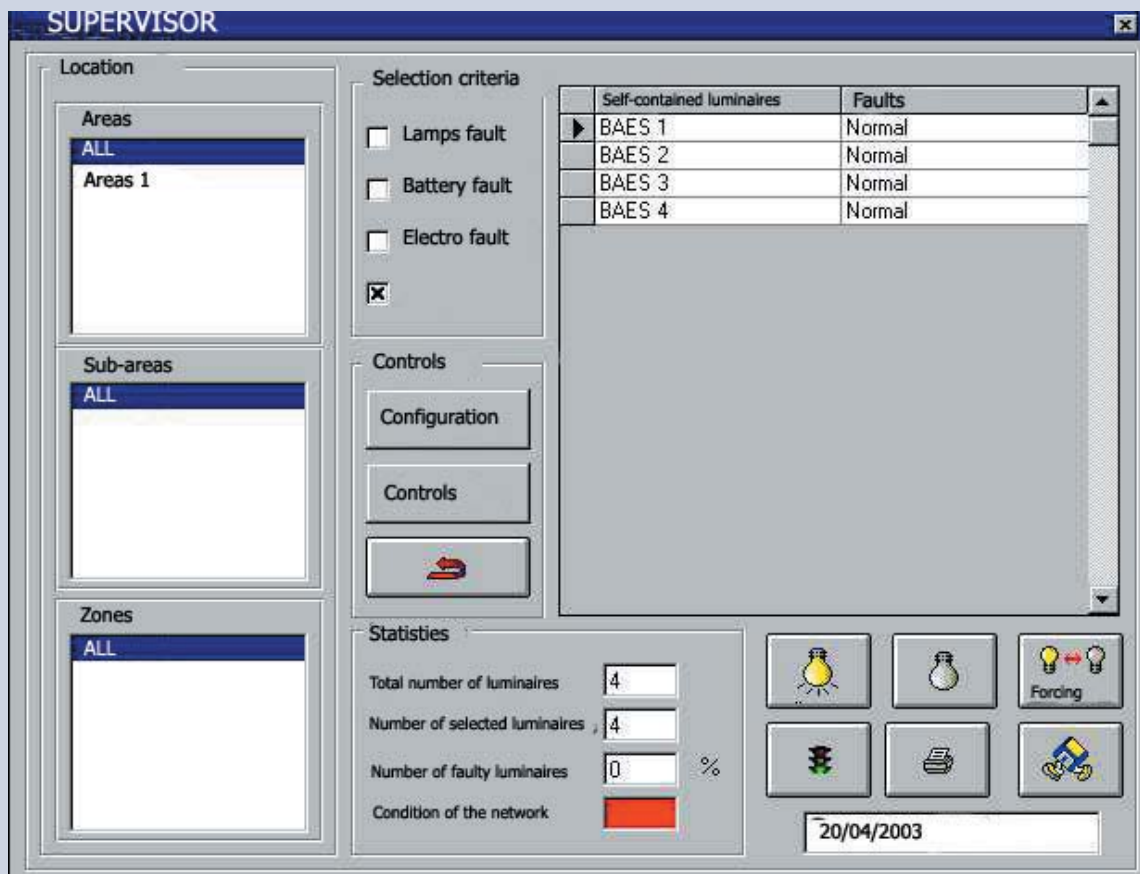
The user-friendliness of the software running under Windows means that users can quickly learn the functions of the system.

### Operating mode

The ATX/URAVISION system accepts all types of network architecture (bus, star, online tree structure).

Easy to set up, the ATX/URAVISION network uses the telecommunications line as the data transmission medium. No additional wiring is required if existing installations are being refurbished.

The ATX/URAVISION system will take mixed installations, i.e. it is compatible with non-addressable units. In a mixed installation, only the ATX/URAVISION units appear on the computer screen. During maintenance operations non-addressable units can be gradually replaced with ATX/URAVISION units, and connected to a BTI interface when the last non-addressable unit is replaced, thus creating a complete installation with centralized control.



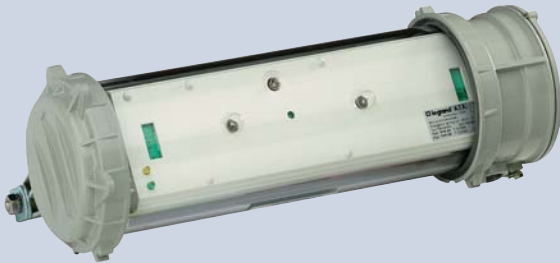
## Products installed in hazardous areas



0949 55

8 W fluorescent addressable unit

- Nominal flux 360 lm - 1 hour emergency duration includes :
- One 8 W fluorescent tube
- One 12 V - 3 W incandescent indicator lamp E10 lampholder, output  $\geq 3$  lm

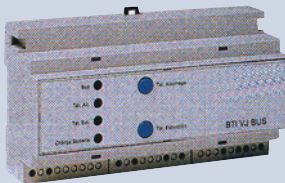


0949 67

Incandescent addressable unit

- Nominal flux 60 lm: 1 hour emergency duration
- Two 3.6 V - 1 A emergency lamps BA9S lampholders
- One 12 V - 3 W indicator lamp flux  $\geq 3$  lm BA9S lamphoder

## Products installed in safe areas (for installation in hazardous locations please consult us)



ATX/URAVISION interface unit "BTI" (equipment sold by URA) between the network of self-contained emergency lighting units and the computer acting as the remote control (compulsory).



ATX/URAVISION booster unit "BR" (equipment sold by URA) for increasing the network capacity.



ATX/URAVISION software

For more information on all the possible configurations with the ATX/URAVISION addressable system, please consult us